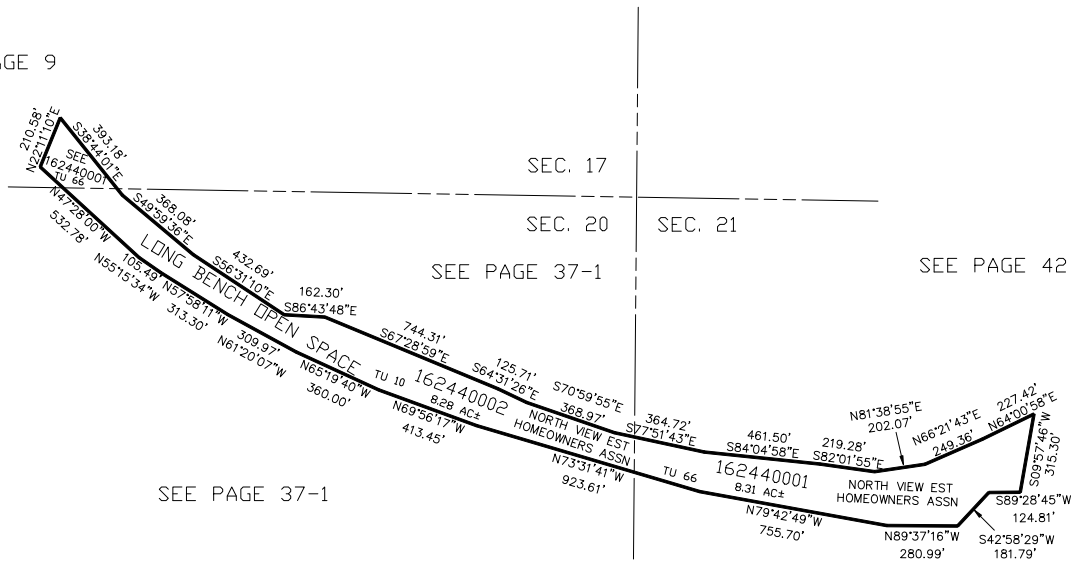


PART OF THE NW 1/4 OF SEC 21 & PT NE 1/4 OF SEC 20 & PT SE 1/4 OF SEC 17, T.7N., R.1W., S.L.B. & M. 244
NORTH VIEW ESTATES SUB PHASE 1

IN NORTH OGDEN CITY
 SCALE 1" = 400'

TAXING UNIT: 10, 66

SEE PAGE 9



SEE PAGE 37-1

SEE PAGE 42

SEE PAGE 37-1

SEE PAGE 42

SEE PAGE 42

FOR COMPLETE ENG DATA SEE ORIGINAL DEDICATION PLAT IN BOOK 58, PAGES 26 & 27 OF RECORDS.